



**GATEKEEPER**  
EMPOWERED BY SYNAQ.

# PROTECT YOUR BUSINESS IP

with mailbox security that's ahead of the game



**SYNAQ**  
BE EMPOWERED.



**zimbra**  
A SYNACOR PRODUCT



# BRUTE FORCE, MEETS BRUTE PROTECTION.

SYNAQ GateKeeper is the Zimbra mailbox security solution of choice for a reason. Actually, for a lot of reasons.

Purpose-built to withstand everything from brute-force login attempts, to credential stuffing, password-guessing attacks and account takeovers – GateKeeper detects a barrage of constantly evolving threats across all protocols, and protects your users without locking them out.

No hardware. No hassle. Just smarter, adaptive protection that keeps your mailbox access and business IP safe, seamless, and secure.

- AI-driven behavioural analytics flag suspicious activity and unusual access patterns.
- Automatic blacklists prevent repeat attacks.
- Admin-configurable whitelists ensure the right people always get in.
- Alerts and dashboards keep IT ahead of the game.



# 1. ALL BUSINESS. NO COMPROMISE.

Whether you're an Internet Service Provider (ISP), Managed Service Provider (MSP) or a Zimbra-focused enterprise – GateKeeper has a highly proven track record in delivering unmatched business mailbox security, protecting sensitive business IP and data, and maintaining uninterrupted service for your users.

# 2. HOW IT WORKS.



## Continuous monitoring

Reduces strain on your Zimbra authentication backend by filtering out mailbox access attacks before they hit your system – minimising DDOS risk and improving overall stability.



## Adaptive security

AI-driven behavioural analytics identify suspicious behaviour patterns like failed logins and unusual locations – blocking threats instantly before they escalate.

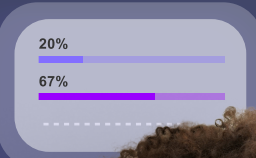


## Seamless integration.

Automated alerts and real-time dashboards empower IT teams to stay ahead of cyber security threats – whilst ensuring uninterrupted access for legitimate users.

A new era of security for Zimbra mailboxes is coming

20%  
67%



20% 67%

20% 67%

20% 67%

20% 67%

20% 67%

20% 67%

20% 67%

20% 67%

20% 67%

20% 67%

20% 67%

20% 67%

20% 67%

20% 67%

20% 67%

20% 67%

20% 67%

20% 67%

20% 67%

20% 67%

20% 67%

20% 67%

20% 67%

20% 67%

20% 67%

20% 67%

20% 67%

20% 67%

20% 67%

20% 67%

20% 67%

20% 67%

20% 67%

### 3.

# ALWAYS ON. NO HARDWARE. NO COMPLEXITY. NO DELAYS.

Mailbox threats don't drag their heels. Neither does GateKeeper. Its fully cloud-based, eliminating the need for additional hardware, reducing operational complexity and IT overhead. All whilst offering scalability, flexibility and automatic updates.

- Zero hardware to install
- Fast deployment
- Seamless remote management
- Auto-updates with the latest threat prevention

## STREAMLINED SET-UP

We've remove delays and simplified the technical process.

- Once you sign up and register for GateKeeper you'll immediately be presented with the tools and information to get your **GateKeeper** service up and running.
- GateKeeper extension for Zimbra is an installable Zimbra module requiring minimal technical capability to deploy.
- If you run a Zimbra service, you already have everything you need.

## BUILT-IN SUPPORT

SYNAQ offers round-the-clock support, including:



### 27/7 Technical Assistance

Ensuring security concerns are addressed promptly.



### Onboarding Guidance

Helping businesses implement and optimise GateKeeper effortlessly.



### Continuous Updates

Keeping your security infrastructure updated with the latest threat intelligence.

## 4. CUSTOMISATION COMES STANDARD.

GateKeeper gives you full control to tailor your mailbox security – so it works the way your business does, not the other way around.

• <b>CONFIGURABLE SECURITY POLICIES</b>	Custom integration for policy-based lockouts, IP whitelisting, hardened password logins – ideal for roaming or international teams.	➤
• <b>ACCESS MANAGEMENT</b>	Assign admin roles and permission with precision, automatically blacklist known threats, directly from your Zimbra environment.	➤
• <b>CUSTOM ALERTS AND NOTIFICATIONS</b>	Set up real-time alerts for high-risk activities, empowering IT teams to respond proactively.	➤
• <b>SEAMLESS SCALABILITY</b>	Adapt GateKeeper's features as your organisation grows, ensuring consistent protection across all users.	➤

## 5. SECURITY YOU CAN MONITOR. INSIGHTS YOU CAN ACT ON.

GateKeeper gives IT teams the visibility they need – when they need it most. Live dashboards and real-time logs provide instant insights into login activity, blocked threats, and emerging risks. No noise. Just the intel that matters.

With automated alerts and behavioural analytics, you'll be notified the moment suspicious patterns arise – so you can respond faster, smarter, and with total clarity.

For enterprise teams, GateKeeper supports custom dashboards, API integrations, and reporting flexibility – making it easy to plug into your existing systems for a unified security overview.

- **Real-time views into mailbox access and threat activity**
- **Immediate alerts for high-risk behaviour**
- **Continuous performance tracking over time**
- **Data-driven decisions to improve your security posture**



6.

## BUILT FOR ZIMBRA. READY FOR MORE.

Currently, GateKeeper is tailored for Zimbra environments, ensuring seamless protection without the need for significant configuration changes.

As businesses increasingly adopt hybrid and multi-platform email solutions, GateKeeper is evolving to integrate with additional environments, delivering the same high-level security across various platforms.

Our roadmap includes expanding compatibility with widely used email systems, enabling organisations to maintain a unified security posture regardless of their infrastructure.

7.

## SERIOUS PROTECTION. SMART PRICING.

GateKeeper offers cost-effective security at scale – with pricing plans starting at just \$0.50 per mailbox.

This allows businesses of all different sizes and needs to implement our robust mailbox security without breaking the bank. Plus, our flexible pricing tiers ensure scalability as your business grows.

### How does the pricing scale work?

- Our sliding scale offers volume-based discounts. Choose between monthly pay-as-you-go or annual plans for added cost savings.

### How do annual or monthly payments work?

- An annual plan offers cost advantages and pricing stability – you can pay upfront or in monthly instalments.
- Pay-as-you-go is perfect for those preferring flexibility without long-term commitment.

### What if I decide not to renew?

- There is a lead time for deactivation, ensuring a smooth and seamless transition with minimal disruption.

# 80%

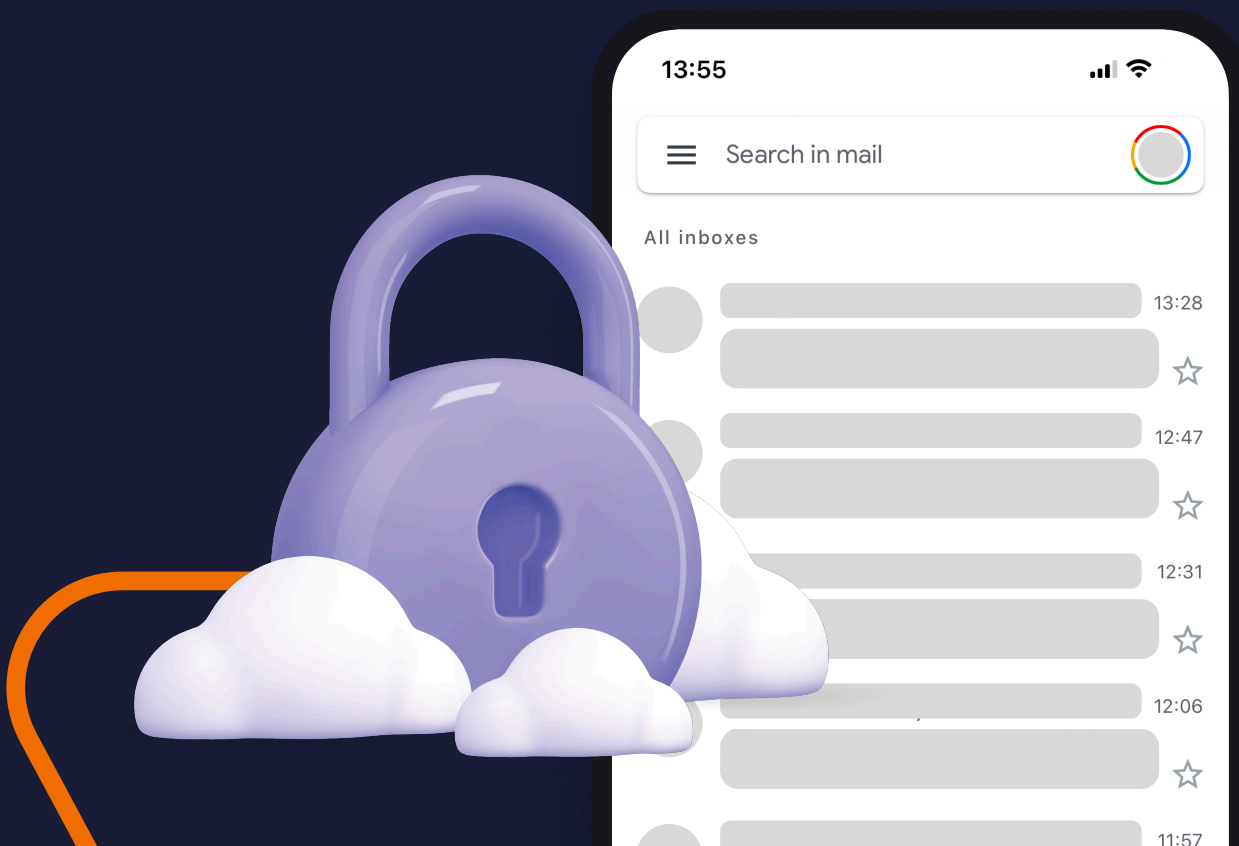
Fewer compromised accounts thanks to Gatekeeper — saving our support team hours of recovery time each month”

ZIMBRA MSP PARTNER

# READY TO TAKE CONTROL?

Secure your Zimbra mailbox  
environment with GateKeeper today.

[GATEKEEPER.SYNAQ.COM](https://gatekeeper.synaq.com)



Contact the SYNAQ team for more  
information on how GateKeeper can  
enhance your mailbox security.

CALL US:  
**+27 11 262 3632**

EMAIL:  
**SALES@SYNAQ.COM**

VISIT US:  
**GATEKEEPER.SYNAQ.COM**